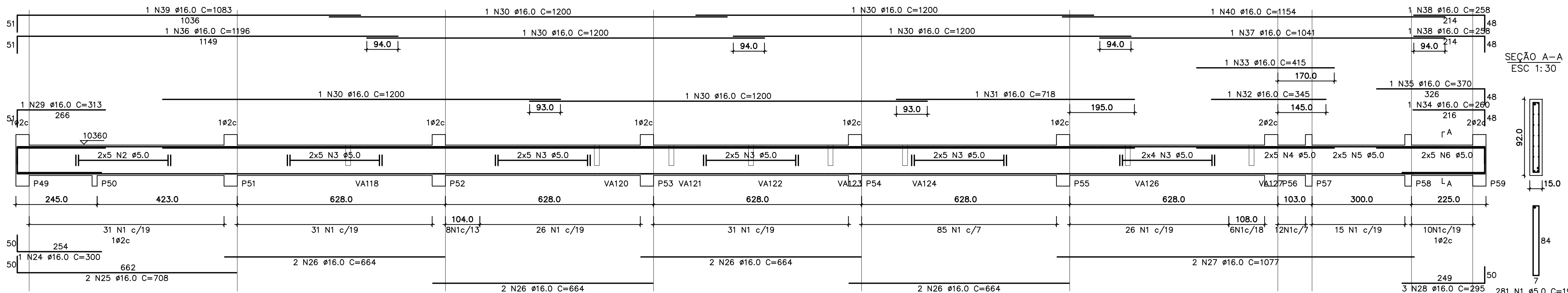
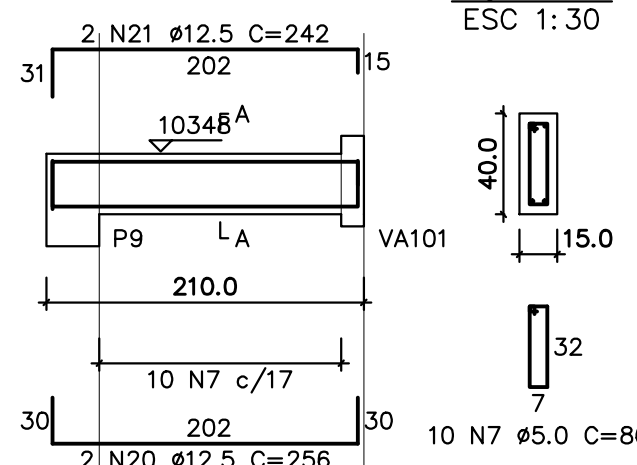


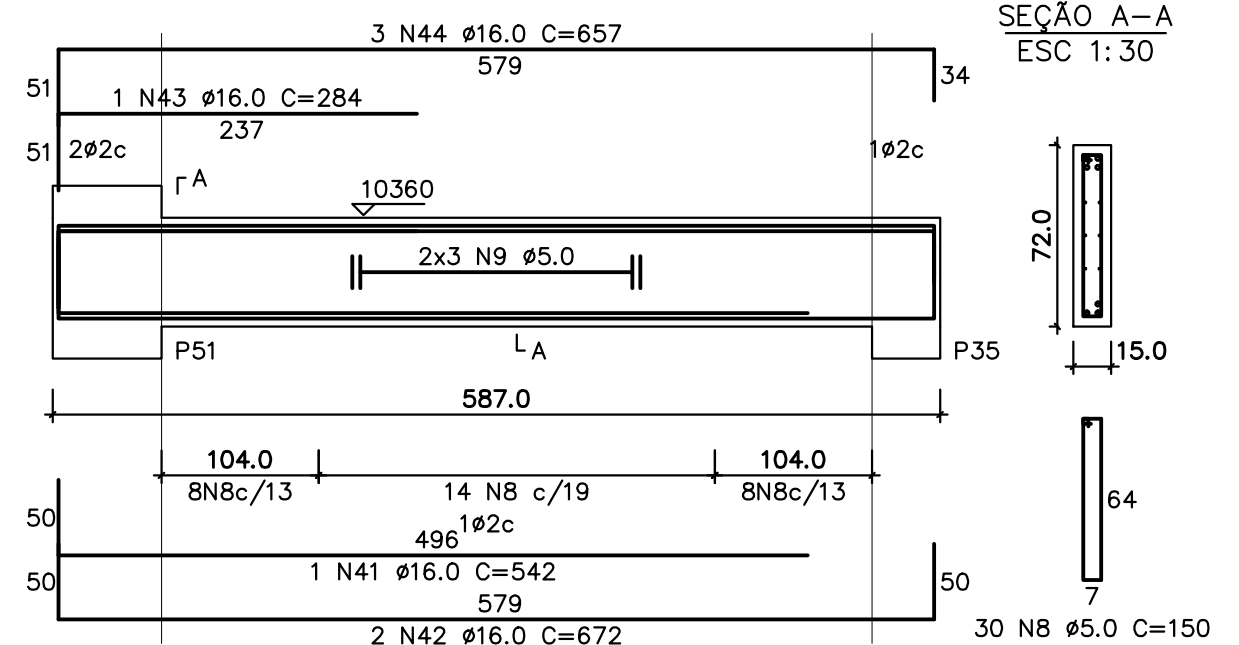
VA112
1:75



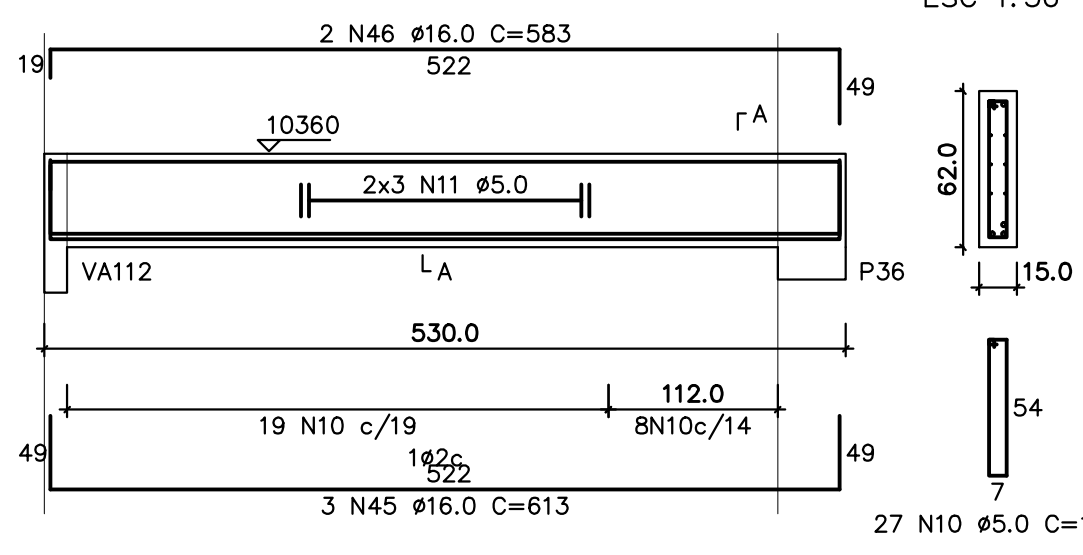
VA116
1:50



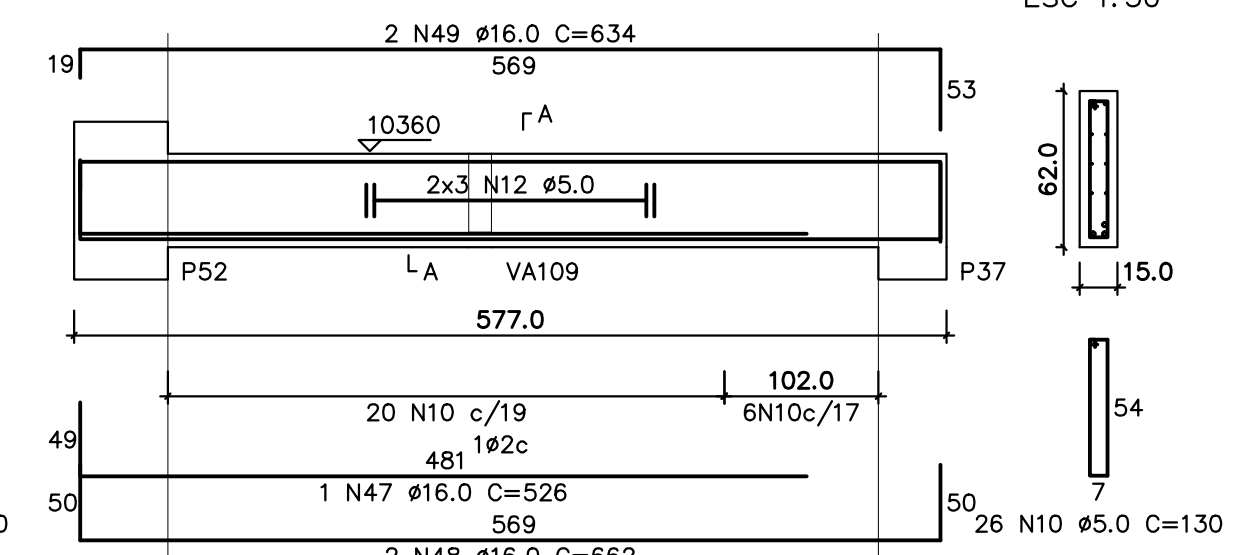
VA117
1:50



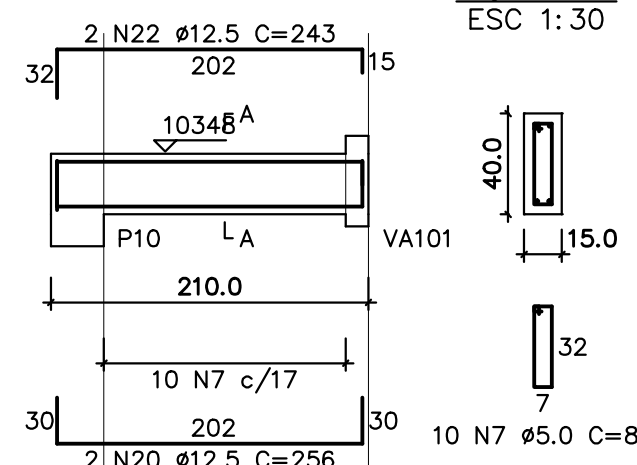
VA118
1:50



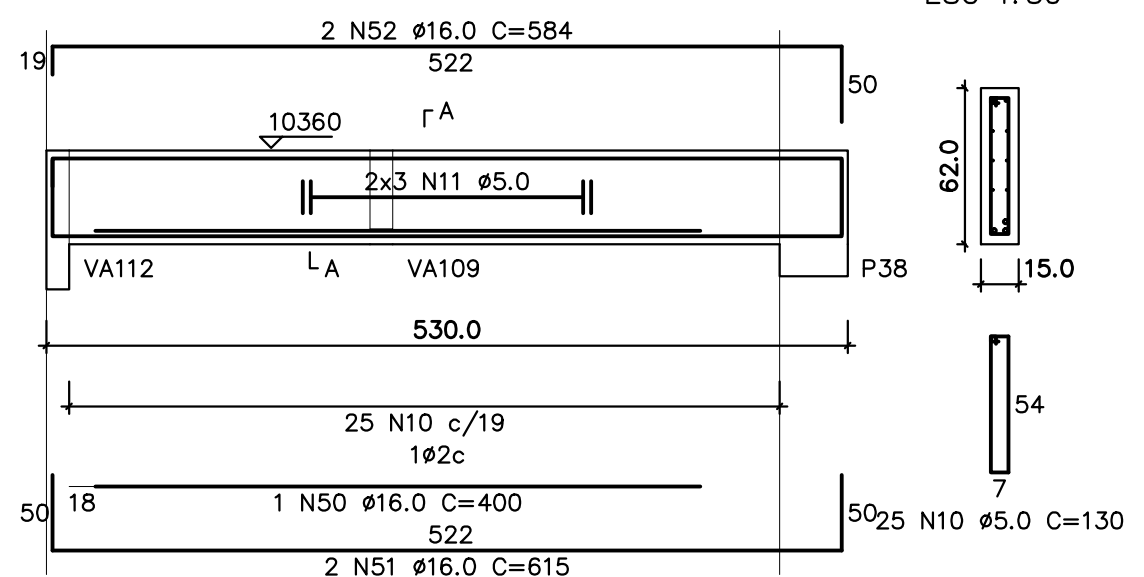
VA119
1:50



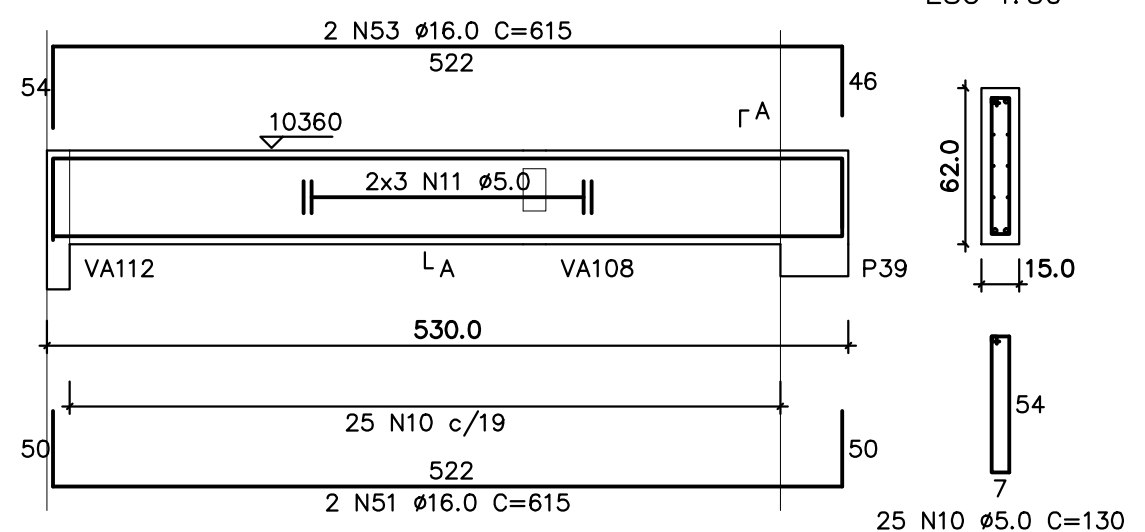
VA129
1:50



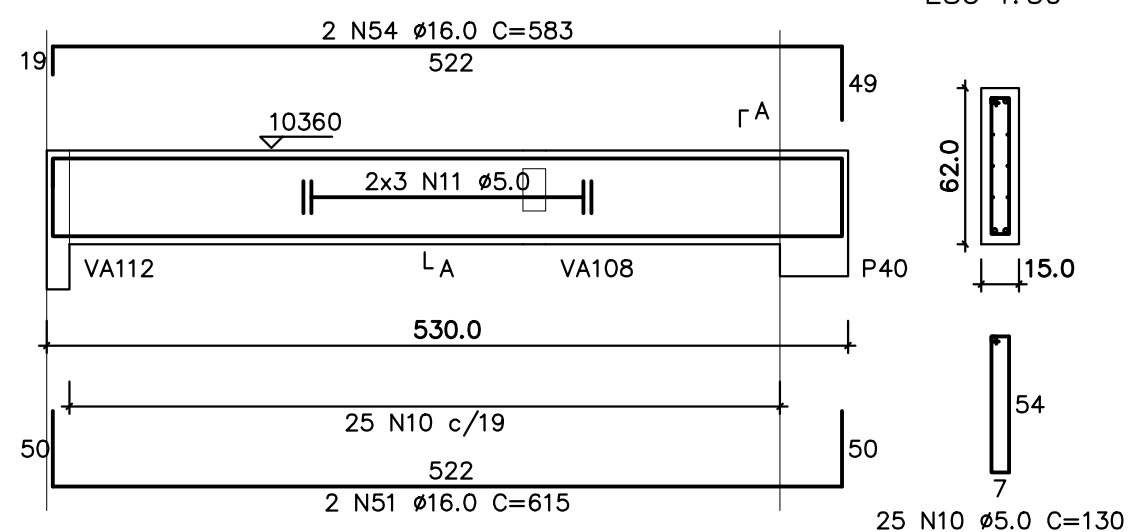
VA120
1:50



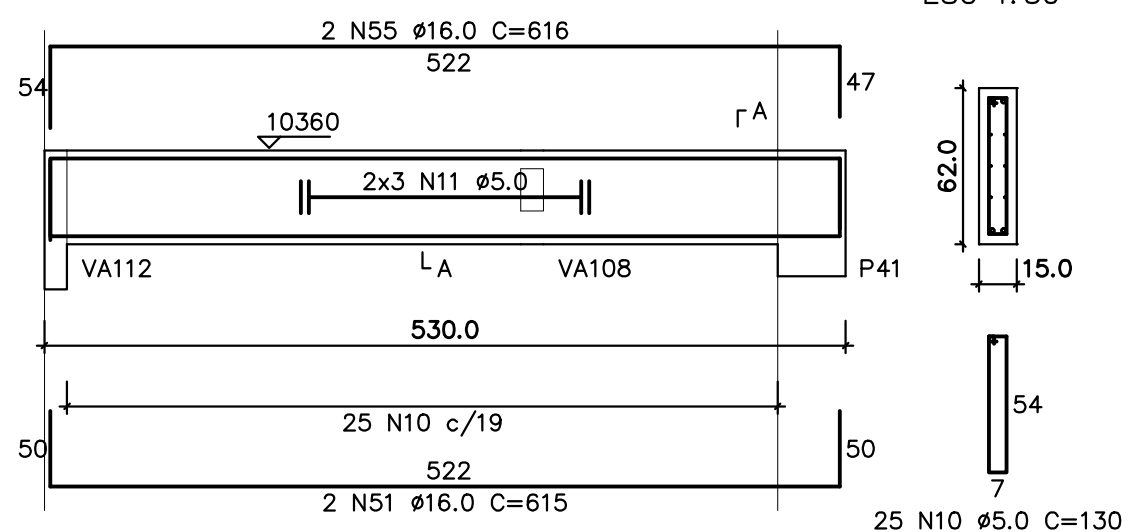
VA121
1:50



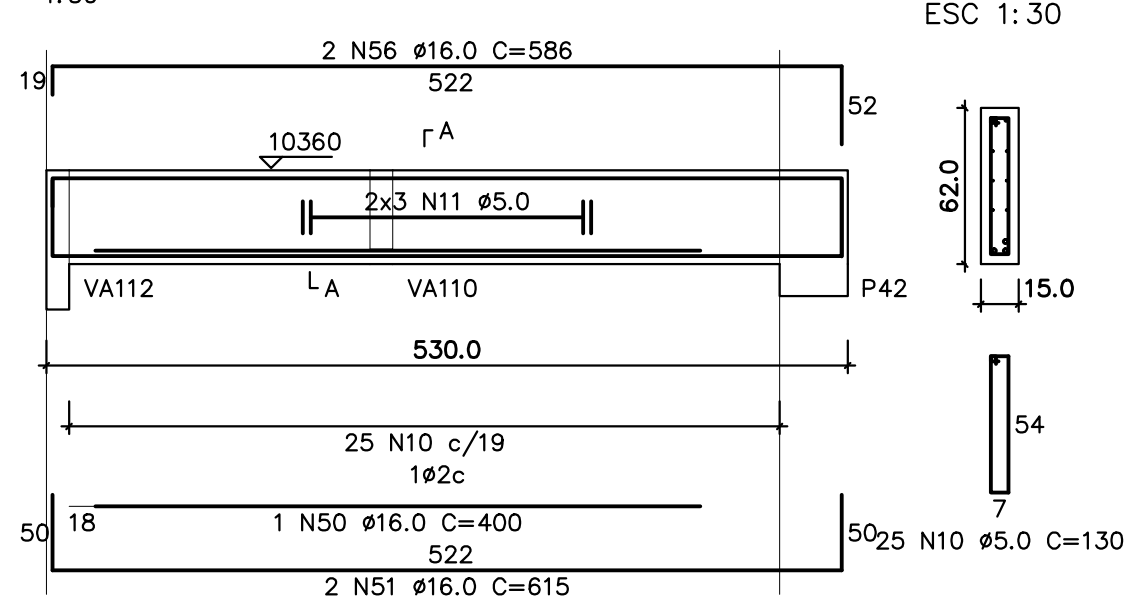
VA122
1:50



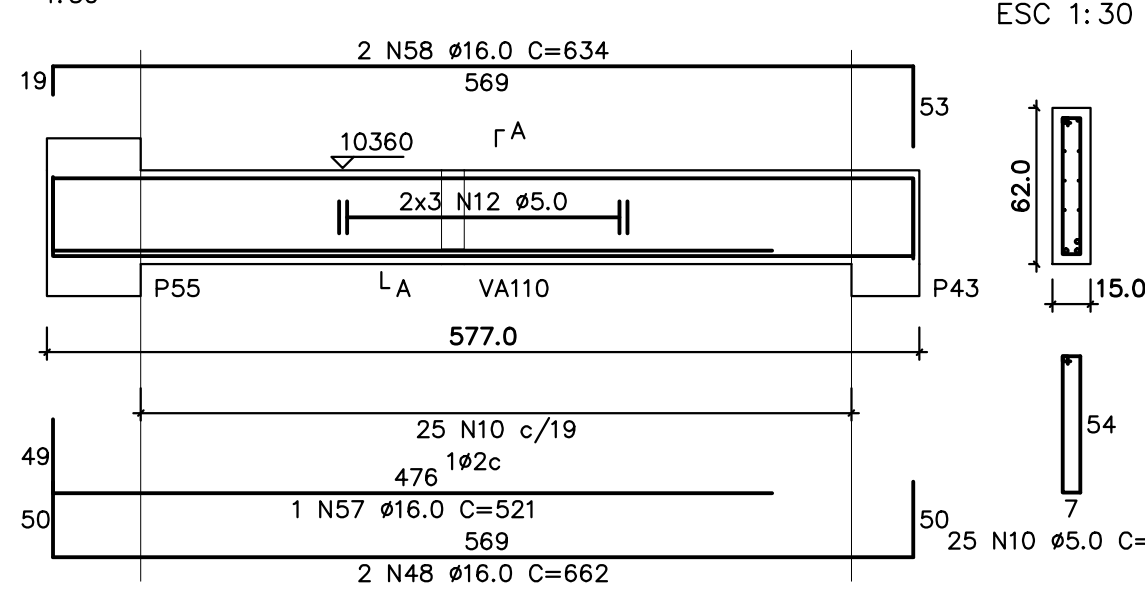
VA123
1:50



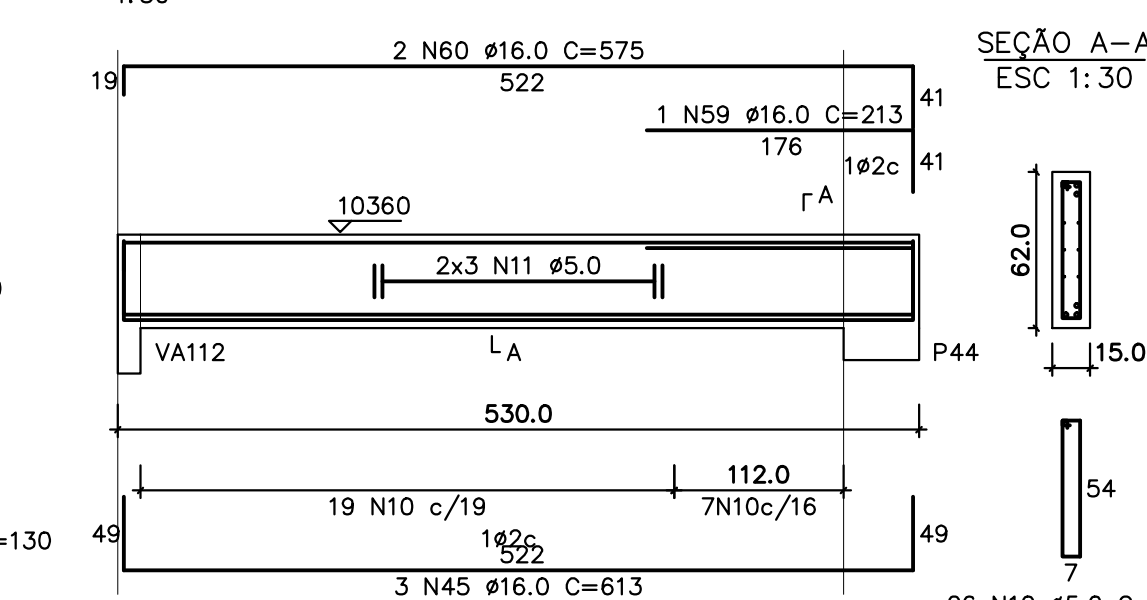
VA124
1:50



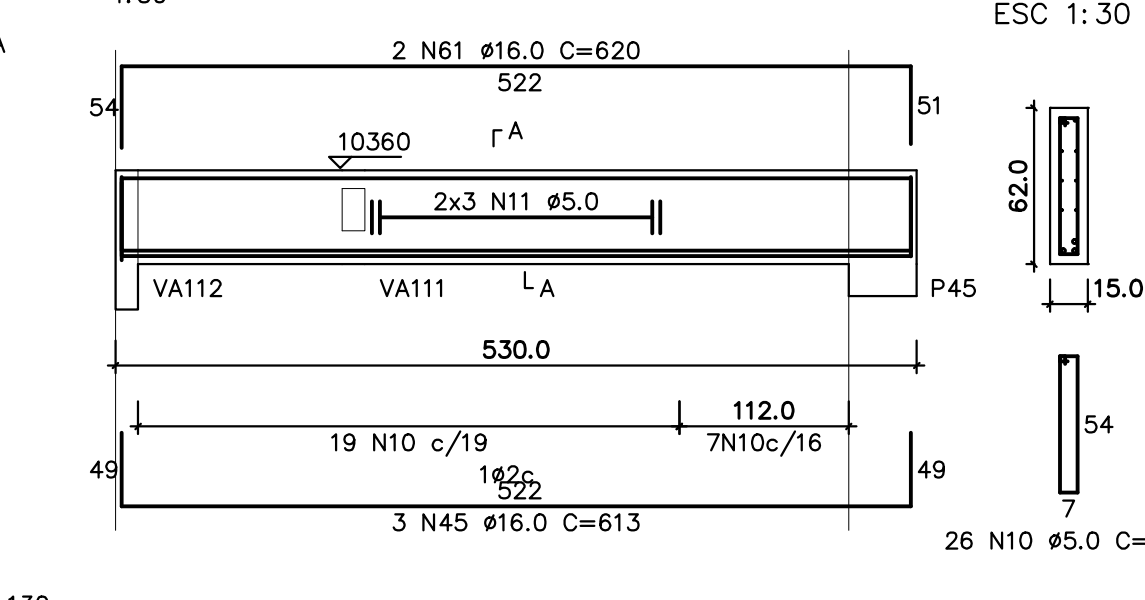
VA125
1:50



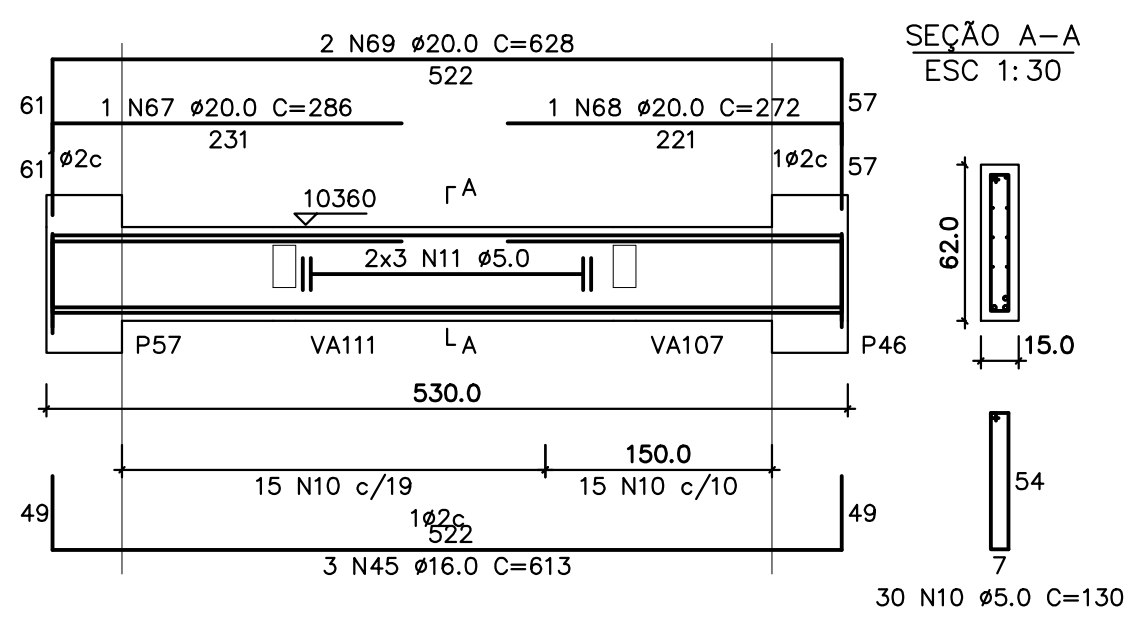
VA126
1:50



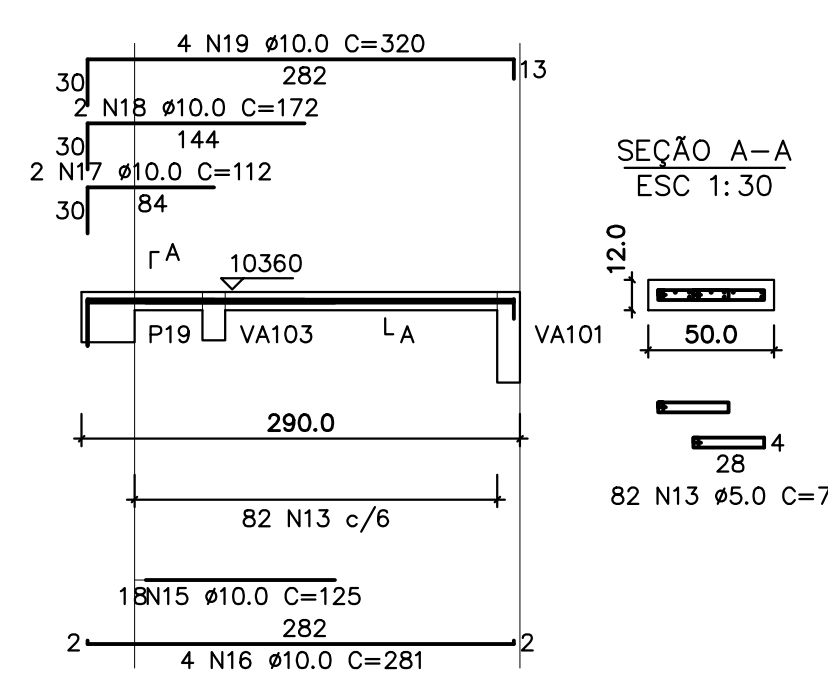
VA127
1:50



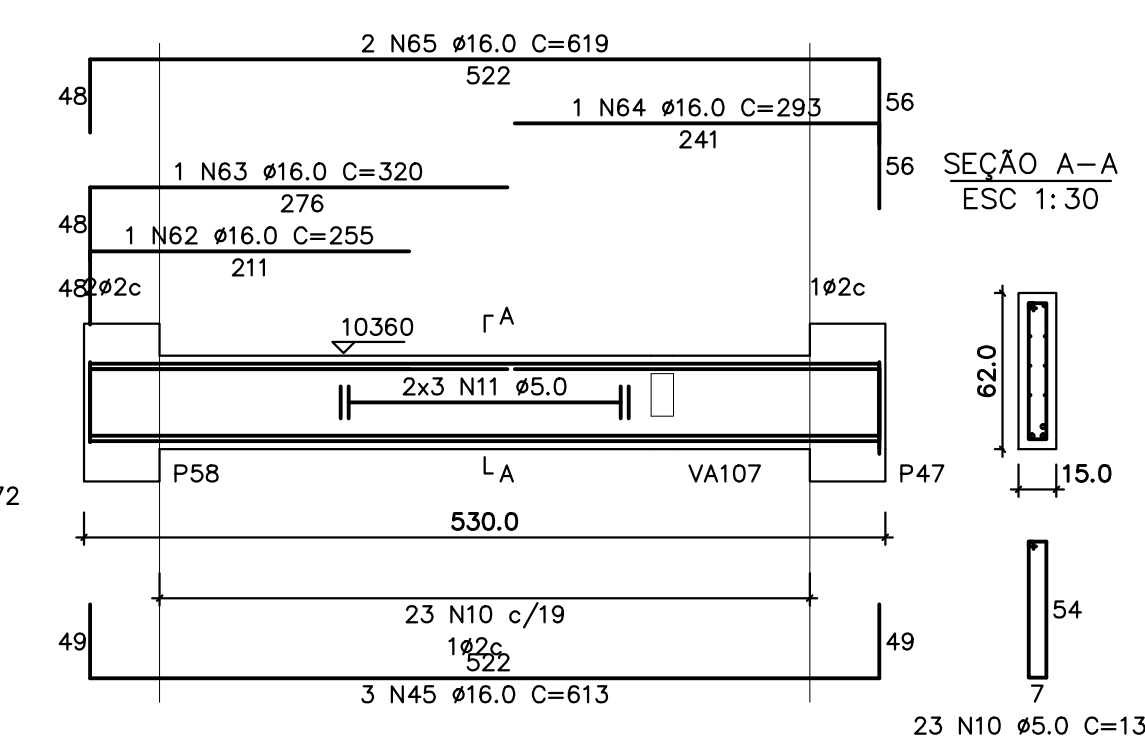
VA128
1:50



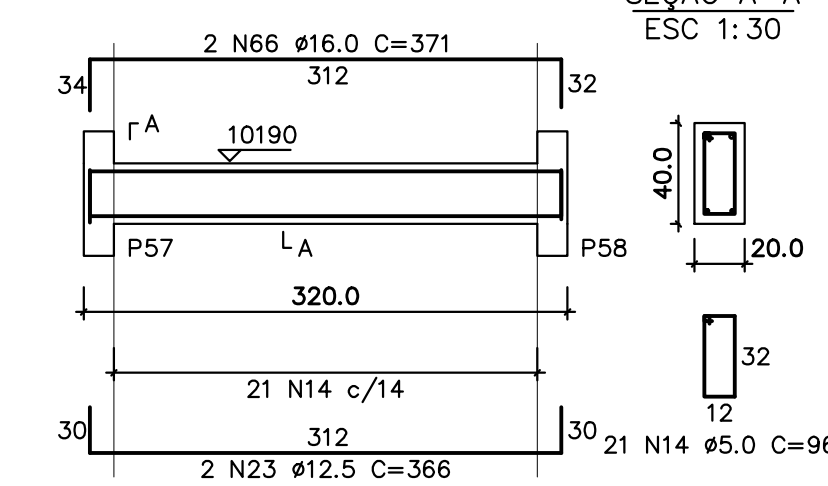
VA130
1:50



VA131
1:50



VESC
1:50



RELAÇÃO DO AÇO						
AÇO	N	DIAM	Q	UNIT (cm)	C.TOTAL (cm)	C.TOTAL (cm)
VA112	1	5.0	281	190	53390	53390
VA118	2	5.0	10	corr	6480	6480
VA121	3	5.0	48	corr	30144	30144
VA124	4	5.0	10	corr	1130	1130
VA127	5	5.0	10	corr	3000	3000
VA130	6	5.0	10	corr	2350	2350
VA116	7	5.0	20	86	1720	1720
VA119	8	5.0	30	150	4500	4500
VA122	9	5.0	6	corr	3522	3522
VA123	10	5.0	308	130	40040	40040
VA125	11	5.0	60	corr	31800	31800
VA126	12	5.0	12	corr	6924	6924
VA127	13	5.0	62	corr	5904	5904
VA128	14	5.0	21	96	2016	2016
VA129	15	10.0	1	125	125	125
VA130	16	10.0	4	281	1124	1124
VA131	17	10.0	2	112	224	224
VESC	18	10.0	2	172	344	344
	19	10.0	4	320	1280	1280
	20	12.5	4	256	1024	1024
	21	12.5	2	242	484	484
	22	12.5	2	243	486	486
	23	12.5	2	366	732	732
	24	16.0	2	300	300	300
	25	16.0	2	708	1416	1416
	26	16.0	8	664	5312	5312
	27	16.0	2	1077	2154	2154
	28	16.0	3	295	885	885
	29	16.0	1	313	313	313
	30	16.0	6	1200	7200	7200
	31	16.0	1	718	718	718
	32	16.0	1	345	345	345
	33	16.0	1	415	415	415
	34	16.0	1	260	260	260
	35	16.0	1	370	370	370
	36	16.0	1	1196	1196	1196
	37	16.0	1	1041	1041	1041
	38	16.0	2	258	516	516
	39	16.0	1	1083	1083	1083
	40	16.0	1	1154	1154	1154
	41	16.0	1	542	542	542
	42	16.0	2	672	1344	1344
	43	16.0	2	284	568	568
	44	16.0	3	657	1971	1971
	45	16.0	15	613	9195	9195
	46	16.0	2	583	1166	1166
	47	16.0	1	526	526	526
	48	16.0	4	662	2648	2648
	49	16.0	2	634	1268	1268
	50	16.0	2	400	800	800
	51	16.0	10	615	6150	6150
	52	16.0	2	584	1168	1168
	53	16.0	2	615	1230	1230
	54	16.0	2	583	1166	1166
	55	16.0	2	616	1232	1232
	56	16.0	2	586	1172	1172
	57	16.0	1	521	521	521
	58	16.0	2	634	1268	1268
	59	16.0	1	213	213	213
	60	16.0	2	575	1150	1150
	61	16.0	2	620	1240	1240
	62	16.0	1	255	255	255
	63	16.0	1	320	320	320
	64	16.0	1	293	293	293
	65	16.0	2	619	1238	1238
	66	16.0	2	371	742	742
	67	20.0	1	296	296	296
	68	20.0	1	272	272	272
	69	20.0	2	628	1256	1256

RESUMO DO AÇO			
AÇO	DIAM	C.TOTAL (m)	PESO+10% (kg)
CA50	10.0	31.0	21.0
	12.5	27.3	28.9
	16.0	637.7	1108.2
	20.0	18.1	49.3
CA60	5.0	1932.9	327.4
PESO TOTAL			
CA50	1207.4		
CA60	327.4		

Vol. concreto total = 13.44 m³
Área de forma total = 196.66 m²
fck = 300.00 kgf/cm²